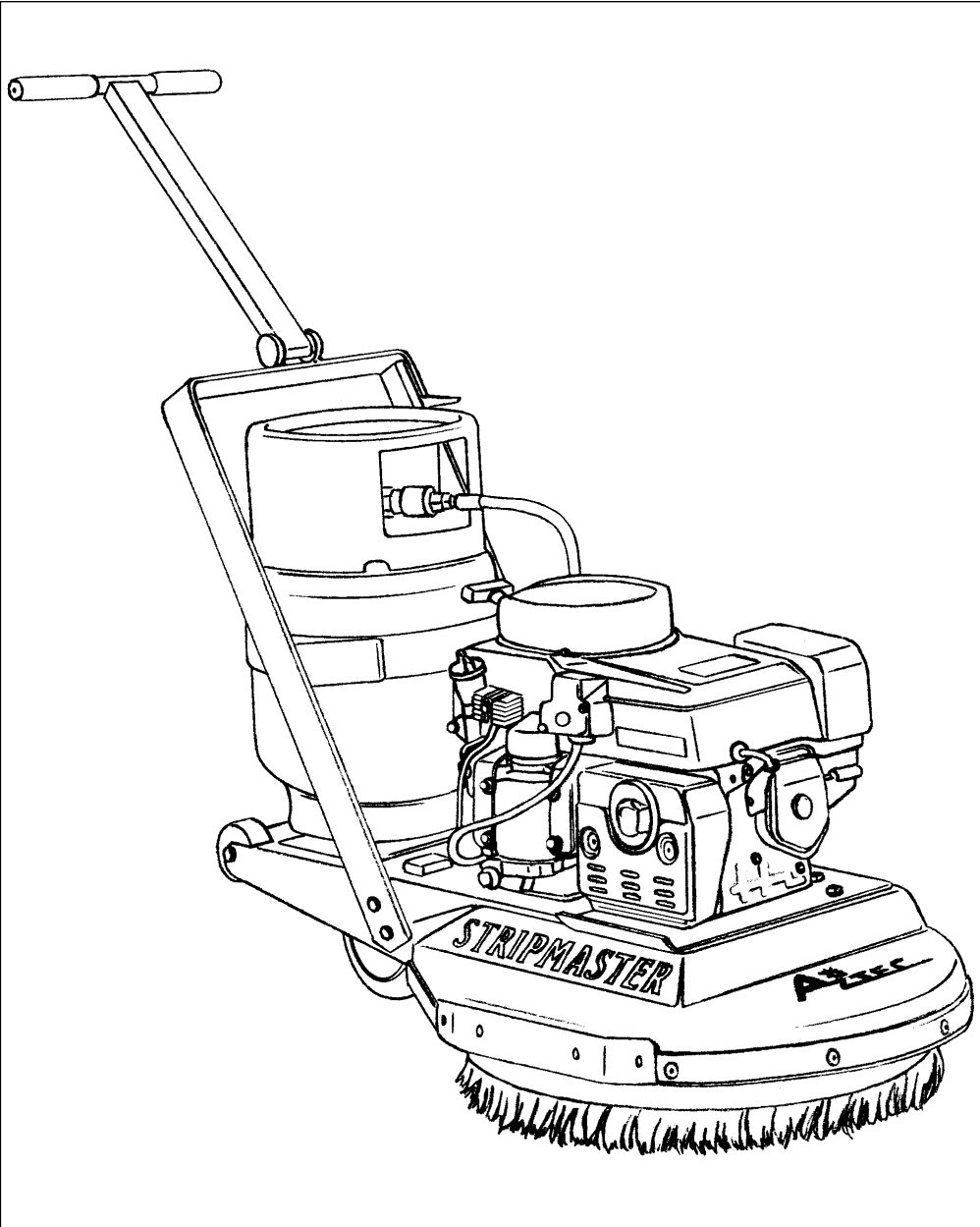


OWNER'S MANUAL

STRIPMASTER



(215) 721-4455 (800) 331-1423 FAX (215) 721-7213
4304 BETHLEHEM PIKE • TELFORD, PA 18969

I. POWERED EQUIPMENT PREPARATION

- A.** Familiarize yourself with equipment by reading manuals and identifying components and controls.
- B.** Check that suggested maintenance schedule has been observed.
- C.** All machines are equipped with a multi-function maintenance meter. The four functions include the following: hours, job timer, service alarm and tachometer. (See **Engine Maintenance Meter Instructions**)
- D.** Never let an untrained person operate or perform repairs on the machine. They may hurt themselves, damage the floor or the equipment.
- E.** Never change or alter the propane control equipment!
- F.** Always check oil before attempting to start engine!
- G.** Install approved and properly filled propane tank.
 - **Never complete the connection of the tank to the machine by using a wrench. Always do it by hand. Listen for the rush of fuel to the lock-out device when you open the tank valve. If you hear this, it will indicate that a good connection has been made at the tank.**
 - **European tank connections may require use of a wrench. However, care should be taken not to overtighten the gas fittings.**
 - **Provide and use ear protection during operation.**

II. STARTING THE ENGINE

- A.** Open propane (LPG) tank valve (counter clockwise).
- B.** Set throttle control at idle for 12 V & choke for electric start system.
- C.** Electric start - push "Start" button until engine starts. Starter should not be engaged for more than 10 seconds at a time.
 - **When a propane tank is overfilled it may temporarily cause the fuel regulator to malfunction. Remove the tank to a well ventilated location. Release some gas until the cloud disappears and escaping gas is "clear." Reinstall tank.**
 - **All machines are equipped with tamper proof fuel systems. If a fuel problem exists, contact an authorized service center.**
 - **Propane tanks should be removed & stored in a protected off site area.**

III. STRIPMASTER OPERATION

- A.** After starting engine, put throttle lever in idle position until ready to strip. Unit has centrifugal clutch. Brush will not turn while engine is in idle position.
- B.** Increase engine speed to desired RPM (2500-3000). Brush will begin to function as you reach 1800 RPM. Engine speed not to exceed 3400 RPM.
- C.** Push machine straight ahead at normal walking speed.
 - **When operation is completed remove tank and store in a secure, protected off site (preferably outdoor) location.**
 - **Do not use on surfaces with a gradient exceeding 2%.**
 - **Never tilt back machine to maintenance position while engine is running.**
 - **Never reach under machine deck when engine is running.**

IV. CAUTION IN STORAGE AND HANDLING: PROPANE TANKS

- A.** Always store equipment away from heater rooms, boilers, gas-fired water heaters or any other source of open flame and away from possible falling objects.
- B.** Always vent an over-full bottle out of doors away from all closed places and away from any fire or flame producing device. Use a screwdriver to vent excess propane which escapes as a white mist until at proper level in tank.
- C.** Always store LPG tanks outside. Remove all tanks from inside building except during equipment use. Store them in a secure, well ventilated area.

V. BRUSH ADJUSTMENT

- A.** To adjust or change brush, lean machine back towards propane tank. Never turn machine on its side.
- B.** Depending on what kind of surfaces the machine is used on; concrete, ceramic tile, vinyl tile, brush life should range from 500,000 to 1,000,000 square feet. As the brush wears down the nose of the machine will lean slightly forward causing the brush to wear down more on the edges.
- C.** The brush bristles start out 1 1/2" long. When the outer bristles are approximately 3/4"-1" move the wheels to the higher holes on the wheel mounts. This will extend brush life and allow the machine to most efficiently address the floor.

STRIPMASTER INFORMATION

I. ENGINE

A. See engine manual for maintenance schedule.

- **Consult local laws regarding used oil.**

II. BRUSH, BELT, IDLER PULLEY, OR DRIVE SHAFT REPLACEMENT:

A. Adjust the handle to enable the buffer to stand on rear wheels. Never turn machine on its side.

- **Handle must be in shipping (forward) position to insure stability in the “tilt back” position. A second person should aide in the lift and to secure the buffer while being serviced.**
- **Do not use handle when attempting to tilt back machine for service or cleaning. Handle is designed for control during operation — Do not use excessive vertical pressure.**

B. Remove brush nut & brush centering device.

C. Remove brush. (Replace if worn.)

D. Remove idler pulley. (Replace if worn.)

E. Remove belt(s). (Replace if worn.)

F. To remove driveshaft unit: Remove retaining bolt & clip—pull driveshaft out of housing—use of a slide hammer may assist in removal (Do not pry with crow bar). While drive shaft is removed, spin bearings. If roughness is felt, bearing replacement may be necessary.

G. To reassemble, reverse order of all steps taken above.

NOT ALL OF THESE STEPS WILL BE NECESSARY FOR ALL JOBS, BUT IF THEY ARE, THE ENTIRE JOB CAN BE COMPLETED QUICKLY WITH A FEW TOOLS.

III. LUBRICATION INSTRUCTIONS:

A. Refer to engine manufacturer's owner's manual and comply completely with the lubrication instructions. Any evidence of under - lubrication will make a claim against the manufacturer invalid.

B. Thoroughly clean air filter each time engine oil is changed.

C. Keep a good service log on each machine with the date, hour meter reading, type(s) of service performed. This will assist you and Aztec in spotting weaknesses in our respective areas of responsibility.

IV. ENGINE MAINTENANCE METER

A. This meter is used to perform preventive maintenance which benefits you with increased fuel economy, less down time and longer engine life. It is simple to operate because of its functional and user friendly design and has a function for every application, detailed as follows:

HOUR METER: Records actual running time of engine. Non-erasable.

B. **TACHOMETER:** Tells you what RPM your engine is running at for maximum power and efficiency. Reads up to 6,000 RPM Do not run in excess of 3400 RPM.

RETURN GOODS POLICY

As an Aztec customer, you are aware that the equipment we design and build is both innovative and unique. Since this is true, in order to trouble-shoot our equipment, we rely heavily on returned defective or failed parts so that we can examine first-hand the causes of failure. While this may at first seem to be an inconvenience, ultimately you benefit from safer and better designed machine components. Please give us the opportunity to serve you better by following these RGA (Returned Goods Authorization) rules.

1. We maintain the serial number, date of shipment or sale, and customer name on each piece of equipment sold. If you were the purchaser, please reference that information on your request for replacement or repair. If you purchased the equipment through a distributor, please contact them first. If you are not satisfied, contact Aztec and give us the Distributor name, purchase date, and the serial number of the product.
2. Order the replacement part from your distributor or Aztec Products by calling 800-331-1423 during normal business hours (8:30-5:00 Eastern Time). We will ship warranted parts at our expense.
3. When dealing with Aztec ask for an RGA number when you are ordering the replacement part. Return the failed part to us within 30 days, freight prepaid, exactly as it was at the time of failure. Our inspection and evaluation will attempt to determine the probable cause of failure.
4. If our inspection reveals that the failed part was defective, we will credit your account for the entire amount of the part including your cost of return freight. When incomplete parts are returned for credit,

RETURN GOODS POLICY (cont'd)

their condition or state of incompleteness will be assessed against the credit claim at the sole discretion of Aztec Products, Inc.

- 5. *We also offer to do warranty related repairs free of charge at our facility. Arrangements must be made in advance as outlined above. We will not accept freight collect returns or returns that do not indicate the RGA # on the packing list.*

Your satisfaction in all of your dealings with Aztec Products, Inc. is extremely important to us. We intend to be reasonable on any matter that is related to our warranted service or other wear-related problems which our customers feel need attention. Please help us to help you. Before assuming that a part is defective, check the repair manual to see if the problem might be something that you or one of your employees might be capable of correcting. If it is not, follow the above policy and depend on us to respond quickly and responsibly.

AZTEC PRODUCTS WARRANTY

Aztec Products, Inc. warrants its products to be free from defects in material and workmanship for a period of one year from the date of sale. (Sidewinders will be warranted for one year or the total wear time on a set of brushes, whichever comes first.) All engines are warranted by the manufacturer of the engine. Honda is warranted for 2 years. The Onan engines are warranted for 3 years but can be extended to 5 years.

*Aztec Products, Inc. agrees, at its discretion, to repair or replace at its own expense any product or part(s) which examination proves to be defective in workmanship or materials provided that the purchaser notifies Aztec Products, Inc. directly, within the warranty period and follows the **Return Policy**.*

This warranty does not apply to or cover equipment damaged by misuse, abuse, neglect, accident, or any use not specified in the instruction manual, or any other circumstances that are clearly out of the control of Aztec Products, Inc. or their authorized agents.

The propane devices are to be regarded as non-serviceable equipment. All repairs or changes must be made under the supervision or arrangement of Aztec Products, Inc. or their agents unless prior written consent has been issued. Any deviation from this arrangement shall make the owner of the equipment and/or party involved in those changes responsible for any and all damages resulting from such changes.

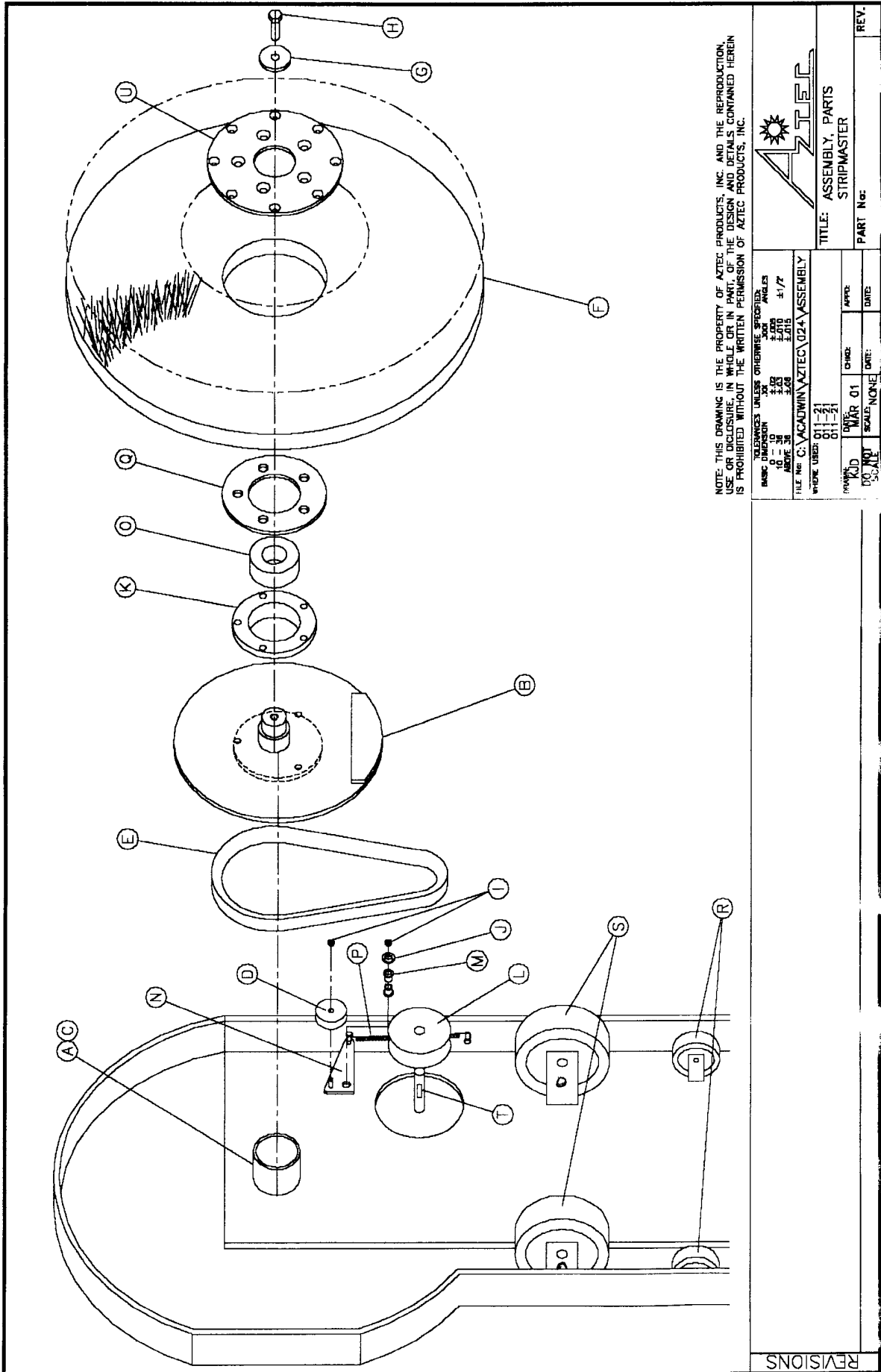
The foregoing is the entire and only Aztec Products, Inc. warranty which in no event covers incidental or consequential damages resulting from any such defective product or part(s). This warranty gives specific legal rights. Purchaser may have other rights which may vary from state to state.

This warranty is non-transferable.

AZTEC PRODUCTS, INC.

4304 Bethlehem Pike • Telford, PA 18969 • (215) 721-4455

Notes



NOTE: THIS DRAWING IS THE PROPERTY OF AZTEC PRODUCTS, INC. AND THE REPRODUCTION, USE, OR ENCLOSURE IN WHOLE OR IN PART OF THIS DRAWING AND DETAILS CONTAINED HEREIN IS PROHIBITED WITHOUT THE WRITTEN PERMISSION OF AZTEC PRODUCTS, INC.

BASED ON DRAWING UNLESS OTHERWISE SPECIFIED:
 DIMENSIONS: 1/16 ±.0005
 1/8 ±.001
 1/4 ±.0015
 3/8 ±.002
 1/2 ±.003
 3/4 ±.004
 1 ±.005
 1 1/2 ±.0075
 2 ±.01
 3 ±.015
 4 ±.02
 5 ±.025
 6 ±.03
 8 ±.04
 10 ±.05
 12 ±.06
 15 ±.075
 20 ±.01
 25 ±.0125
 30 ±.015
 40 ±.02
 50 ±.025
 60 ±.03
 75 ±.0375
 100 ±.05
 125 ±.0625
 150 ±.075
 200 ±.01
 250 ±.0125
 300 ±.015
 400 ±.02
 500 ±.025
 600 ±.03
 800 ±.04
 1000 ±.05
 1250 ±.0625
 1500 ±.075
 2000 ±.01
 2500 ±.0125
 3000 ±.015
 4000 ±.02
 5000 ±.025
 6000 ±.03
 8000 ±.04
 10000 ±.05

TITLE: ASSEMBLY, PARTS STRIPMASTER	
DATE: 01-21-21	REV.:
BY: JKD	PART No.:
CHKD: MWR 01	
DATE: 01-21-21	
SCALE: NONE	

REVISIONS

PART LIST FOR STRIPMASTER

PART	DESCRIPTION	PART NUMBER	QTY	NOTES
A	BEARING CAPTURE	N/A	1	
B	DRIVE SHAFT	024-772DS	1	
C	SET SCREW	N/A	1	1/4x20x1/2" BOLT
D	V-IDLER PULLEY	188-V42B	1	
E	DRIVE BELT	113-L536		
F	BRUSH 20"	201-20000SP	1	
G	BRUSH HOLDER PLATE	024-700	1	
H	BOLT	N/A	4	3/8"-16x1 1/4x3/4 BOLT
I	HEX NUT	N/A	3	3/8"-16 HEX NUT
J	FLAT WASHER	N/A	2	5/16" FLAT WASHER
K	BEARING HOUSING	024-100	1	
L	CENTRIFUGAL CLUTCH	311-160015	1	
M	NYLON BUSHING	196-71200	2	
N	CLUTCHING IDLER	024-962I	1	
O	BEARING	024-200	1	
P	SPRING	173-7599-DWG	1	.085-.75(OD)x7" SPRING
Q	SPACER	024-300		
R	POLY WHEEL	156-PB-03041-08	2	3x1.25 POLYOFIN WHEEL
S	5" WHEEL	156-ACPL4-5J3	2	
T	KEY	199-NHNT-SE-UND	1	1/4" SQUARE KEY
U	BRUSH ADAPTER PLATES	024-400	1	



(215) 721-4455 (800) 331-1423 FAX (215) 721-7213
4304 BETHLEHEM PIKE • TELFORD, PA 18969