

# ***OWNER'S MANUAL***

## ***FINISHER MODEL 700***

- *OPERATION*
- *MAINTENANCE*
- *TROUBLE SHOOTING*
- *REPAIR PARTS*



*READ THESE  
INSTRUCTIONS  
BEFORE USING*



*(215) 721-4455 (800) 331-1423 FAX (215) 721-7213  
4300 BETHLEHEM PIKE • TELFORD, PA 18969*

## RECEIVING THE EQUIPMENT

Inspect Upon Unpacking

The shipping carton contains:

- 1 - Floor finish applicator base unit
- 1 - Lift handle
- 1 - Small finish pad
- 1 - Bypass hose assembly
- 1 - Handle for small finish pad
- 1 - Distribution tube clean-out brush
- 1 - Vinyl clean-out tube extension
- 1 - Hose with shut off valve connector
- 1 - Small Part Package  
containing:

- Pin vise with extra pins
- Extra distribution tube end plugs

## PREPARATION FOR OPERATION

### 1) Attach Trough with Distribution Tube to Machine

Insert the left and right latch pins on the trough to the holes in the support bracket on the front of the machine. Make sure the latch pin connector lines up with the right arm on the right side of the machine. Connect the feed tube from the machine with the line from the distribution tube which is in the trough.

### 2) Attach Finish Pad to Pad Holder

For best results, saturate pad with finish before installing. Place the pad holder over it with the latch pins up, center it over the pad then fold the colored Velcro edge of the pad and secure to the top of the pad holder. First secure one side, then pull the pad tight and secure other side to the pad holder. Match black to black and white to white.

### 3) Attach Pad Holder with Pad to Trough Assembly

### 4) Attach Lift Handle

Slide the detachable lift handle through the handle guide on the side of the machine. Attach the handle to the trough using the key pin. Pull the lift handle to raise the trough to the up position. The handle will lock in the up position by slightly pulling the handle toward the machine and into the handle lock notch.

THE MACHINE IS NOW READY TO OPERATE

## OPERATION OF THE AZTEC FINISHER

- With the machine assembled and the trough and pad holder in the down position, place the container of floor finish in the machine's container well. Insert the suction tube with the screen filter and the return tube into the container. Raise the large front wheels off the floor by tipping the machine back slightly and pushing down on the prime stand. This will keep the wheels off the floor for priming. Turn the valve on the machine to the ON position. Place the FLOW located on the right side of the machine to the MAX position. The wheel next to the flow meter has a handle. Facing the wheel, turn the handle so that the wheel moves in a clockwise direction to prime the machine. When finish comes out of the distribution tube, you are ready to go.
- Release the prime stand. Set the FLOW SELECTOR to the desired output. Use the foam covered pull handle to pull the machine and apply the finish. As the machine is pulled a consistent amount of finish will be deposited onto the floor and spread by the pad. The operator need only to monitor the application to ensure that there are no streaks or misses. The machine will only pump when it is being pulled. Pushing the machine will not pump finish.

## TROUBLESHOOTING CHART

### PREPARATION FOR OPERATION

<u>Problem</u>	<u>Cause</u>	<u>Solution</u>
Machine Leaves Streaks	Pad has excess debris	Put the pad holder in the UP position and remove debris from pad.
	Out of Finish	Place new container of finish on the machine.
	Suction Line Filter is blocked/restricted	Remove suction line from machine & rinse with hot water.
	Distribution tube blocked	Remove trough assembly & remove distribution tube. Clean with clean-out brush and/or pin vise. <i>Note: Covering distribution tube with moist towel eliminates this problem.</i>
	Re-coated too soon	Allow adequate dry time between coats. Burnish after 24 hours.

## **CLEANING INSTRUCTIONS**

- *With the trough and pad holder in the UP position, raise the large front wheels off the floor by tipping the machine back feed line slightly and pushing down on the prime stand. This will keep the wheels off the floor for activating the pump.*
- *Turn the on/off valve on the top of the machine to the OFF position and set the flow control lever to the MAX setting.*
- *Disconnect the handle from the trough then disconnect the Trough from the support bracket. Disconnect the pad holder. Remove the finish pad from the pad holder and wash.*
- *Connect the female fitting on the Clean-out Hose to the male fitting on the distribution tube and flush with water. Remove the distribution tube from the trough and remove the plastic end caps on the distribution tube so that you can run the clean-out brush through the inside of the distribution tube. Replace the plastic end caps and replace the distribution tube in the trough, making sure that the small holes face away from the trough. Clean entire assembly with stripper.*
- *Place an empty 5 gallon container on the machine & put the return line in the container. Put machine in up position using prime stand. Connect feed line extension hose to feed line and put in empty container. Disconnect the suction tube with the filter and place in sink. Connect clean-out hose Y; one to the SUCTION FITTING & the other to the RINSE FITTING. Turn water OFF. Turn ON/OFF switch to ON position. Slowly turn water ON and allow to flow using wheel handle; turn wheel clockwise. You will notice short spurts of water and finish solution coming through the line; continue until clear. Notice: Failure to flush the pump completely may cause pump damage. Shut water off. Disconnect both fittings and reconnect SUCTION LINE. Turn machine to OFF position when finished or transporting the machine. Disconnect feed line extension and store hoses and parts in empty pail for next use.*

## **TIPS FOR APPLYING FINISH**

### **FOR OPERATION OF YOUR MACHINE**

- *Overlap passes by 2-3 inches.*
- *For large areas, wax by smaller sections so you can always keep a wet edge to overlap.*
- *Turn the machine to the OFF position 10 feet before the end of a coat, or in small, hard to maneuver areas to use up the finish already in the applicator pad.*
- *Always remember to turn the machine back ON when resuming normal operation.*
- *Walk at a comfortable speed. Generally the machine will apply finish as fast as the operator is walking, however it is possible to walk faster than the machine can evenly spread the finish.*
- *The extension handle is used with the small pad and pad holder to touch up the area at the end of the job and for small spaces that the machine will not fit into.*
- *When transporting machine or allowing the machine to sit, make sure all mop yarn on pad holder is faced down toward the drip tray.*
- *IMPORTANT! When finished with a coat, take a moist towel and place in drip tray covering the distribution tube!*

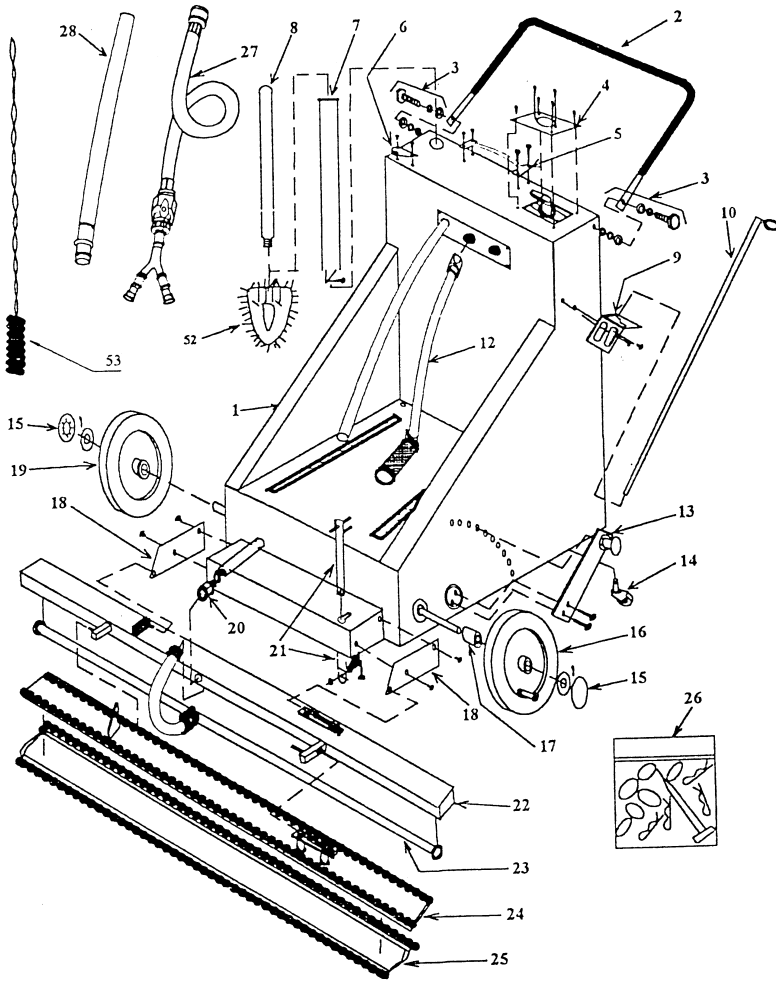
## **TIPS FOR APPLYING MOP-ON TYPE FLOOR RESTORERS**

*The FINISHER can also be used to apply your floor restorer as a part of an integrated floor care program! The process is the same as above. Take an empty 5 gallon container, add chemical, and properly dilute. Place container on the machine, drop in the hoses, set the flow selector and apply chemical. Allow the chemical to dry and burnish your floors to brilliance.*

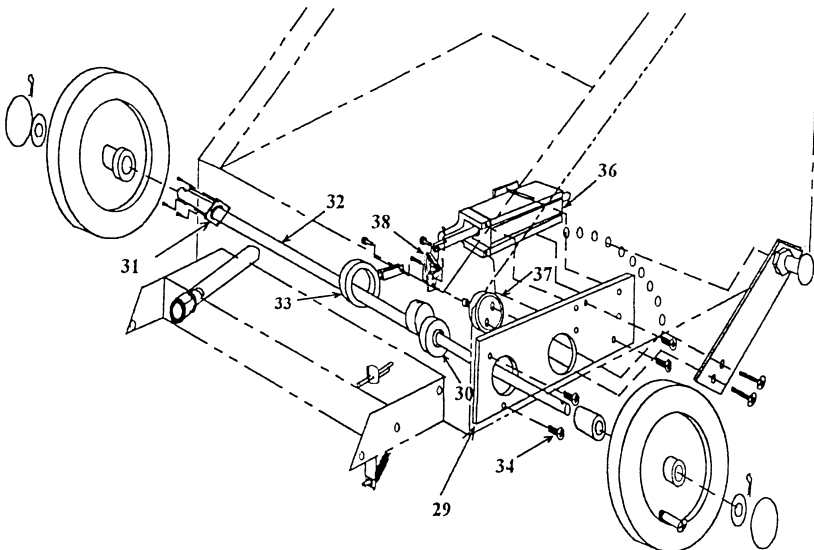
## **PREVENTIVE MAINTENANCE**

- *Use Aerosol Spray Lubricant or equivalent to displace water and lubricate the FINISHER after every use.*
- *Spray wheel bushings on both wheels and tilt machine on its back and spray pump assembly and all moving parts.*
- *DO NOT LET UNIT FREEZE!*

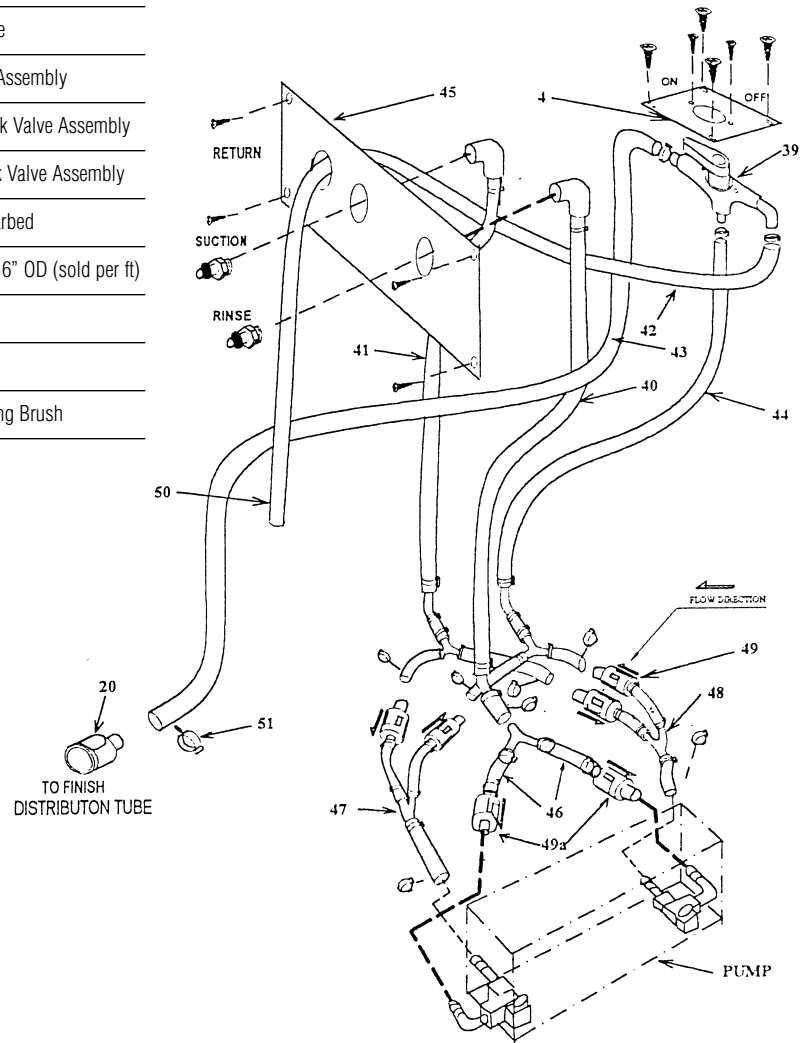
# PG. 3 FINISHER



1	F 7001	1	Machine Body
2	F 7004	1	Pull Handle Assembly
3	F 7007	2	Pull Handle Hardware
4	F 7010	1	Top Plate
5	F 7013	1	Top Handle
6	F 7016	1	Lift Handle
7	F 7019	1	Tube, Mop Handle
8	F 7022	1	Small Mop Handle
9	F 7025	1	Lift Handle Guide
10	F 7028	1	Lift Handle Assembly
12	F 7034	1	Suction Tube Assembly
13	F 7037	1	Flow Selector Assembly
14	F 7040	1	Castor
15	F 7043	2	Wheel Lock End Cap
16	F 7046	1	Drive Wheel Assembly
17	F 7049	1	Lock Bearing
18	F 7052	2	Head Bracket Support
19	F 7055	1	Front Free Wheel
20	F 7058	1	Feed Line Female Connector
21	F 7061	1	Prime Stand Assembly
22	F 7064	1	Trough Assembly - 28
23	F 7073	1	Distribution Tube Assembly - 28
24	F 782	1	Pad Holder Assembly - 28
25		1	Finish Pad - See Price List
26	F 7091	1	Parts Kit
			Pin Vise
			Four Hitch Pins
			Six End Caps
27	F 7103	1	Y Clean-out Hose Assembly
28	F 7106	1	Rinse Hose Extension Assembly
29	F 7109	1	Pump Support Plate
30	F 7112	1	Axle Bearing
31	F 7115	1	Free Wheel Axle Bearing Assembly
32	F 7118	1	Axle Assembly w/cam
33	F 7121	1	Accentric Bushing Assembly (Axle)
34	F 7124	16	1/4-20 Philips Hd Screw



36	FT-8100		Unipump Complete Pump Assembly
	FT-8105		Unipump Replacement Seal Kit (consists of replacement seals and gaskets)
	FT-8110		Unipump Piston Rod Assembly Kit (consists of new piston rod assembly)
37	F 7136	1	Flow Selector Eccentric
38	F7139	1	Pump Thrust Cam
39	F 7142	1	3-Way Valve Assembly
40	F 7145	1	Rinse Line Assembly
41	F 7148	1	Internal Suction Line Assembly
42	F 7151	1	Return Line Assembly
43	F 7154	1	Distribution Tube Feed Line Assembly
44	F 7157	1	3-Way Valve Feed Line Assembly
45	F 7160	1	Line Feed-Thru Mtg Plate
46	F 7163	1	Rinse Line Check Valve Assembly
47	F 7166	1	Front Suction Feed Check Valve Assembly
48	F 7169	1	Rear Suction Feed Check Valve Assembly
49	F 7173	1	Check Valve - Double Barbed
50	F 7175	6	Vinyl Tubing 3/8" ID, 9/16" OD (sold per ft)
51	F 7178		Hose Clamp
52	F 7181	1	Finish Mop, Small
53	FT-618	1	Distribution Tube Cleaning Brush



### **LIMITED ONE YEAR WARRANTY**

*Aztec Products, Inc. warrants its products to be free from defects in material and workmanship for a period of one year from the date of sale.*

*Aztec Products, Inc. agrees, at its option, to repair or replace at its own expense any product or part(s) which examination proves to be defective in workmanship or materials provided that the purchaser notifies Aztec Products, Inc. directly, within the warranty period, and follows the Return Policy.*

*This warranty does not apply to or cover equipment damaged by misuse, abuse, neglect, accident, or any use not specified in the instruction manual, or any other circumstances that are out of the control of Aztec Products, Inc. or their authorized agents.*

*All repairs or changes must be made under the supervision or arrangement of Aztec Products, Inc. or their agents unless prior written consent has been issued. Any deviation from this arrangement shall make the owner of the equipment and/or party involved in those changes responsible for any and all damages resulting from such changes.*

*The foregoing is the entire and only Aztec Products, Inc. warranty which in no event covers incidental or consequential damages resulting from any such defective product or part(s). This warranty gives specific legal rights. Purchaser may have other rights which vary from state to state.*

***This warranty is non-transferable.***

**AZTEC PRODUCTS, INC.**

4304 Bethlehem Pike • Telford, PA 18969 • (215) 721-4455

## **RETURN GOODS POLICY**

*As our customer, you are aware that the equipment we design and build is both innovative and unique. Since this is true, in order to troubleshoot our equipment, we rely heavily on returned defective or failed parts so that we can examine firsthand the causes of failure. While this may at first seem to be an inconvenience, ultimately you benefit from safer, better designed machine components. Please give us the opportunity to serve you better by following these RGA (Return Goods Authorization) rules.*

- 1. We maintain the serial number, date of shipment or sale, and customer name on each piece of equipment sold. If you were the purchaser, please reference that information on your request for replacement or repair. If you purchased the equipment through a distributor, please give us that company name, the date, and the serial number of the product.*
- 2. Order the replacement part from Aztec Products by calling 215-721-4455 during normal business hours (8:30 - 5:00 Eastern Time). We will ship parts that are under warranty at our expense.*
- 3. Ask for an RGA number when you are ordering the replacement part. Return the failed part to us within 14 days, freight prepaid, exactly as it was at the time of failure. Our inspection and evaluation will attempt to*

*determine the probable cause of failure.*

- 4. If our inspection reveals that the failed part was defective, we will credit your account for the entire amount of the part including your cost of return freight. When incomplete parts are returned for credit, their condition or state of incompleteness will be assessed against the credit claim at the sole discretion of Aztec Products, Inc.*
- 5. We also offer to do warranty related repairs free of charge at our facility. Arrangements must be made in advance as outlined above. We will not accept freight collect returns or returns that do not indicate the RGA # on the packing list.*

*Your satisfaction in all of your dealings with Aztec Products, Inc. is extremely important to us. We intend to be reasonable on any matter that is related to our warranty service or other wear-related problems which our customers feel need attention. Please help us to help you. Before assuming that a part is defective, check the repair manual to see if the problem might be something that you or one of your employees might be capable of correcting. If it is not, follow the above policy and depend on us to respond quickly and responsibly.*

# **Notes**



***(215) 721-4455 (800) 331-1423 FAX (215) 721-7213  
4300 BETHLEHEM PIKE • TELFORD, PA 18969***